

**Arts Living Space,Tokyo “co • iki”**

**A new form of Arts Residency Program located in Sengawa, Tokyo.**

— Powered by Borderless Arts Network—



**Calling for new  
creative inhabitants!**

**from January,2017 onwards**

**We're Waiting for You!**

**co • iki**

© bozzo

photo by bozzo

Contact : “co • iki” [telephone] +81 (0)3-6883-8677 [e-mail] [contact@co-iki.org](mailto:contact@co-iki.org)  
[website] <http://co-iki.org/> [facebook] <https://www.facebook.com/c0iki>  
[instagram] <http://instagram.com/co.iki>

**co-living,co-breathing,co-creating. co • iki**  
**umu. sumu. co • iki**

co • iki is a new form of residence which fosters creativity from everyday living. Whilst staying in Japan one can push the boundaries of their practice further and take on new challenges. And with the rich support of co • iki members you can achieve something exciting!

☐Residence Location

15 mins walk from Sengawa Station on the Keio Line

While just 20 mins from Shinjuku, Central Tokyo, this area is rich in greenery. It boasts a thriving shopping street, gathering people of different generations, as well as a Shrine, Temple, a small theater and art museum, amongst other cultural facilities. It is also host to a traditional annual festival, as well as cutting edge art and music events, bringing the old and new together.

☐Residence Space

The residence is a typical house in which residents may have the chance to encounter everyday Japanese living. Shared spaces consist of the living room and kitchen, in which one may freely relax. The private space consists of a Japanese tatami mat room with a view onto the surrounding fields and woodland.

- ☐The residence is non-smoking
- ☐Residents are responsible for their own cleaning
- ☐The owner lives above on the second floor

☐Residence Period and Costs

Period : 2-6 months

Cost : 100,000JPY per person per month \*excluding utility fee

- ☐This includes member support approximately 1 day per week.
- ☐Depending on the level of support required a further cost may be incurred. Please enquire as to these details.
- ☐Costs of flight, food, travel, insurance and everyday living are at the resident's own burden
- ☐For those wishing to take up a short stay please contact us separately.

☐Who can stay?

- Those who have a plan they want to realize in Japan. Age, gender, nationality, occupation and professional field are of no consequence.
- Someone who is internationally active, experimenting in new ideas and creative practices of various fields and is looking to develop this into the future.
- Those who wish to collaborate with other people and fields in Tokyo/Japan.
- Someone who is comfortable with visitors coming and going in the open event/studio/living space, and not too concerned about absolute privacy of their room.

☐Application Process \*Please download the application form from co-iki website.

- STEP1 Applications Accepted — [Jan.2017 and onwards](#)
- STEP2 Applications Reviewed
- STEP3 Notification \*1 month after the submission of official application forms.
- STEP4 Matching Interview (via skype)

Contact : "co • iki" [telephone] +81 (0)3-6883-8677 [e-mail] [contact@co-iki.org](mailto:contact@co-iki.org)  
[website] <http://co-iki.org/> [facebook] <https://www.facebook.com/c0iki>  
[instagram] <http://instagram.com/co.iki>

STEP5 Confirmation

STEP6 Residence (2-6 months)

□The above dates may be subject to change.

□**What is co • iki?**

co-living, co-breathing, co-llaboration, co-working, co-creating.....

co • iki is a space of living and breathing together.

Arts Living Space “co • iki” brings together people of all genres of art, crafts and professional fields, creating a bridge towards new collaborations born from the art of living. It also aims to create a platform in which participant is able to make personal discoveries, changes and growth from everyday life, while at the same time developing a new art form, a living community which reaches beyond any single field or perspective.

□**Suitable for:**

Creative professionals of all fields with no restriction on genre, age or nationality.  
e.g. Artist/Scientist/Writer/Cook/Researcher/Entrepreneur/Designer/Architect  
/Producer/Planner/Curator/Famer/Dancer/Photographer/Poet/Musician  
/Performer/Politician/Composer/Actor/Philosopher/.... and a lot more.

□**Details of Support**

**Resident Support**

Residents in this program are expected to be independent, actively pursuing their research upon their own resources. co • iki does try to help as much as possible, offering coordination support of approximately 1-2 days a week, and with the director in residence participants don't have to call far if they need a hand with something.

**Co-ordination**

The co • iki team also provide a coordination service for creative professionals beyond the residence program. If you are visiting Japan with a particular project in mind but need help in realizing it please feel free to contact us. These services are subject to a separate charge.

- Professional Introductions – do you need to be put in touch with other professionals in the field? We can contact key persons and make appointments for you to make your trip as efficient as possible.
- Translation – we are open to consultation on the translation of various documents
- Interview Support – Do you plan to hold interviews or meetings but are worried about the language barrier? We can provide simple interpretation services in the key creative fields.
- Research Assistance – We can also provide assistance in collating

Contact : “co • iki” [telephone] +81(0)3-6883-8677 [e-mail] [contact@co-iki.org](mailto:contact@co-iki.org)  
[website] <http://co-iki.org/> [facebook] <https://www.facebook.com/c0iki>  
[instagram] <http://instagram.com/co.iki>



resources and connecting you with people, places and documents for your research.

- Exhibition/Event Coordination/Programming

#### < Document Production > \*Option

A small pamphlet will be made as a document of the work and stay of each resident on the completion of their residency, with copies sent on to their forwarding address. \* This is an optional service available at extra cost.

#### < Other Programs >

In tandem with the residence program co • iki members are also involved in the planning and facilitation of independent creative programs within and without the residence building. Through these programs a wide variety of social topics are tackled, alongside concern for traditional cultures and local community, encouraging collaboration across a wide variety of fields.

Members are also able to suggest particular collaborations which might be relevant to the participating resident.

#### < co • iki Facilities >

##### [Shared Space]

The first floor includes events/studio/living space(shared with the owner), with the residence bedroom in the farthest room. The doors of this room may be closed but generally are encouraged to be kept open as an extension of the living space



1F Studio & Living Space



1F Studio & Living Space



Contact : "co・iki" [telephone] +81(0)3-6883-8677 [e-mail] [contact@co-iki.org](mailto:contact@co-iki.org)  
[website] <http://co-iki.org/> [facebook] <https://www.facebook.com/coiki>  
[instagram] <http://instagram.com/co.iki>



1F Kitchen





## [Private Space]



1F Tatami bedroom, with window overlooking allotments. The doors of this room can be opened out fully to the shared living space for a more open feel.

## <Local Neighborhood>

Point 1.

Sengawa is a district populated by students, young people and families alike, with a lively gathering of people around the station and shopping street areas. In the area you can find a variety of specialist shops, restaurants, supermarkets and even a DIY store all within walking distance with all kinds of goods and materials easily at your fingertips.

Contact : "co・iki" [telephone] +81 (0)3-6883-8677 [e-mail] [contact@co-iki.org](mailto:contact@co-iki.org)  
[website] <http://co-iki.org/> [facebook] <https://www.facebook.com/c0iki>  
[instagram] <http://instagram.com/co.iki>



Point 2.

There is a wide provision of cultural facilities including theater, art museum, gallery and music university close at hand. In addition to regular festivals and events the area also boasts the annual “Jazz Art Sengawa” music festival alongside leading art programs.

Sengawa Theater <http://www.sengawa-gekijo.jp/>

JAZZ ART SENGAWA <http://www.sengawa-gekijo.jp/kouen/11470.html>

<https://www.facebook.com/jazzartsengawa>



Tokyo Art Museum <http://www.tokyoartmuseum.com/> + Sengawa Theater  
<http://www.sengawa-gekijo.jp/>

Contact : “co・iki” [telephone] +81 (0)3-6883-8677 [e-mail] [contact@co-iki.org](mailto:contact@co-iki.org)  
 [website] <http://co-iki.org/> [facebook] <https://www.facebook.com/coiki>  
 [instagram] <http://instagram.com/co.iki>





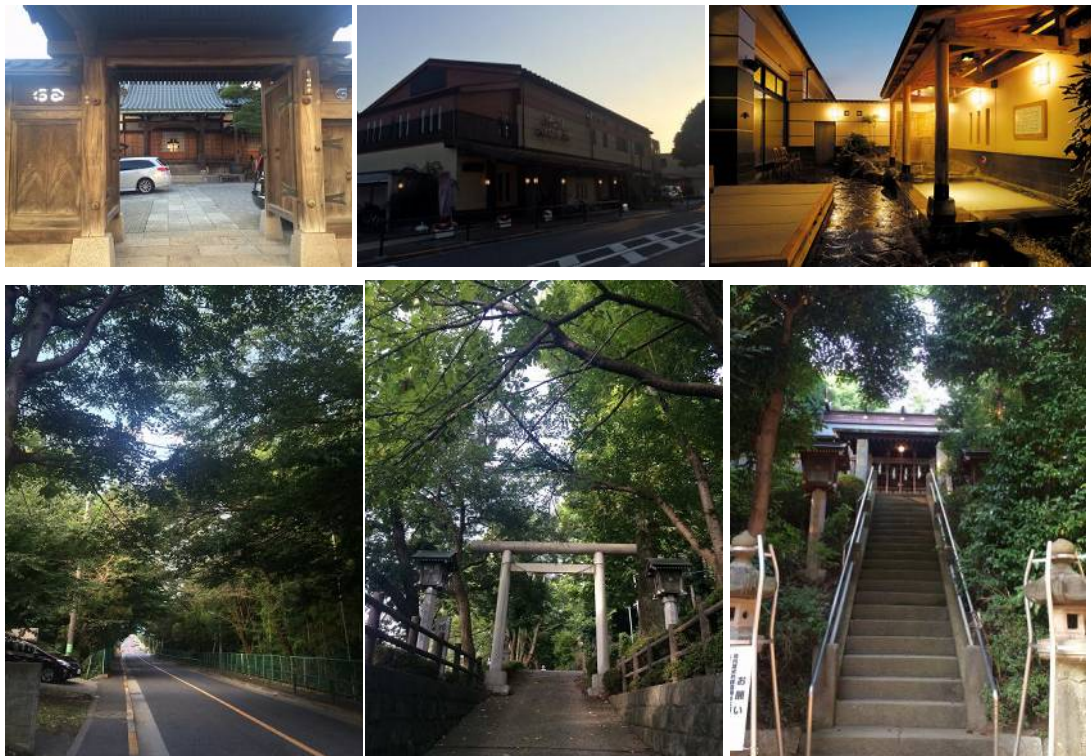
Gallery Space

Mushakoji Saneatsu Kinenkan <http://www.mushakoji.org/index.html>



Point 3.

Centrally located, just 18 minutes by train from Shinjuku station on the Keio line, Sengawa is the perfect location from which to access the bustle of the city while being amongst the greenery of the suburbs, amongst which may be found a historic temple and a public bath “onsen” facility.



Contact : “co・iki” [telephone] +81(0)3-6883-8677 [e-mail] [contact@co-iki.org](mailto:contact@co-iki.org)  
 [website] <http://co-iki.org/> [facebook] <https://www.facebook.com/c0iki>  
 [instagram] <http://instagram.com/co.iki>

<co • iki members> □ as of March 2016 – subject to change

Owner : Yoko Negami

Support Members : Kaori Tooyama, Sakura Alice Motomura, Emma Ota,  
Satoe Kanamori, Nozomu Kikuchi

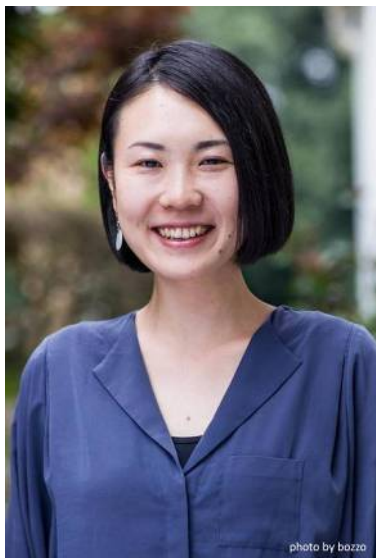
Photo : bozzo

## Profiles



### Yoko Negami

Graduated from the International Relations Course of Tsuda College. Studied at Wimbledon School of Art. She works between a wide range of fields from government led programs to entertainment events, further linking art with other areas of engagement. She also coordinates contemporary dance events, community art projects and offers support towards emerging artists. She has initiated co • iki due to her interest in the ties between the individual and society, interdisciplinary processes and coexistence.



### Kaori Tooyama

Graduated from the Masters program in Music Anthropology of Tokyo University of the Arts. After working for a record label she has come to work in a field supporting young artists and is currently developing a program for a regional body rooted in the local culture. She holds a wide interest in all forms of art expression and cultural engagement which link with history, locality and society, and is building research across these areas.

Contact : "co • iki" [telephone] +81 (0)3-6883-8677 [e-mail] [contact@co-iki.org](mailto:contact@co-iki.org)  
[website] <http://co-iki.org/> [facebook] <https://www.facebook.com/c0iki>  
[instagram] <http://instagram.com/co.iki>





### **Sakura Alice Motomura**

Sakura grew up in Perth Western Australia. She graduated from the School of Art at the Australian National University where she majored in painting. She also spent a year as an exchange student at Kyoto Seika University. Later she came back to Japan under a Monbukagakusho Scholarship to complete her Master of Fine Art at Tama Art University in Tokyo. She has participated in various exhibitions in Australia, Japan, Korea and New York. Recently she has been involved as a participant and

helper in the Lee Ming Wei exhibition at the Mori Art Museum.

Sakura is very interested in the exchange of thoughts and ideas from people of all different backgrounds. This could be through language, visual art, music or a variety of different mediums.

“I believe the world really is a wonderland, it can be beautiful and inspiring or sometimes a little scary, strange and complex. Art can express these things. It is free and open in its expression as well as in its interpretation and that is one of the things I like about it.”



### **Emma Ota**

Graduated from the master course of Musashino Art University in 2011. Organizer of the project “dislocate”, questioning the meaning of locality in globalized technology driven society. Guest curator at Akiba Art Lab. Has also been engaged in long term research into media art and artist run spaces particularly in the Asian region. She pursues art as a platform for the collision of ideas and debate surrounding the current condition of society. <http://www.dis-locate.net> | <http://www.eonsbetween.net>





### **Satoe Kanamori**

Graduated from English Literature course of Tsuda College.

Has been involved in the marketing of product development for a food company, through which she has directly encountered the appeal of bringing something new into the world. She is currently undertaking the planning and facilitation of events.



### **Nozomu Kikuchi**

Graduated from the architecture department of Tokyo University of Science. During his time as a student he volunteered in projects such as Echigo-Tsumari Triennale as well as contributing to events run by Yoko Negami. After graduating Lin worked for Kasuya Architects Office and now belongs to a generic architectural firm.